

SHOES FOR CREWS[®]

THE ORIGINAL SLIP-RESISTANT FOOTWEAR SINCE 1984

BEST SELLER!

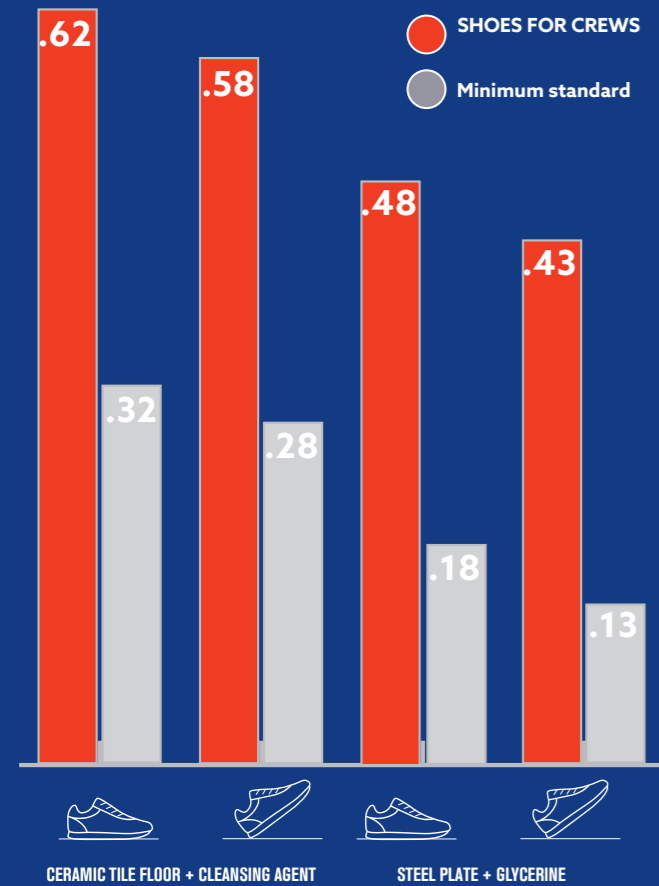
CONDOR
FOR THE
WORKPLACE
ATHLETE
SLIP RESISTANT
CE CERTIFIED
OB E SRC
FOR MEN & WOMEN



Celebrating
35 YEARS
of Safety

THE SHOE THAT GRIPS®

SRC TEST RESULTS



Slip Resistance Test EN ISO 13287:2012, performed by TUV Rheinland LGA Products GmbH in Leipzig, Germany during January 2017. On a scale where 0.0 is the absence of friction and 1.0 is very high friction (e.g. dry carpet), SFC rated .63 - more than tripling the .18 minimum standard. All SFC shoes use the Shoes For Crews patented slip-resistant outsole. Product tested: Bridgetown 28740.

SFC TECHNOLOGY

FEATURE TripGuard
BENEFIT Smoother transitions between floor surfaces

FEATURE SpillGuard
BENEFIT Protective membrane lining protects forefoot against hot liquid spills

FEATURE Water Resistant uppers
BENEFIT Keeping feet dry and comfortable

SUPERIOR SFC SLIP RESISTANT OUTSOLE

FEATURE
BENEFIT Safer steps in slippery environments - featured on all SFC styles

FEATURE Comfortable midsoles & removable insoles
BENEFIT Enhanced comfort when you are on your feet for hours

FEATURE CE CERTIFICATION on many of our styles
BENEFIT Conforms with health, safety, and environmental protection standards for products sold within the EU

FEATURE Clog resistant & flexible outsoles
BENEFIT Limits amount of debris that sticks to outsole and bends with your natural foot movement

NEW SAFETY STYLES!



NEW STRATTON III [O2] - Waterproof Occupational Boot



NEW ENGINEER III [S2] Composite Toe



NEW TILLMAN III [S2] Composite Toe

WORK HARD. STAY SAFE. LOOK GOOD.



BEST SELLER CONDOR [OB E SRC]

Celebrating 35 Years of Safety

CONTENTS

WOMEN'S

Athletic	4
Casual	7
Dress	12
Safety	15

ACCESSORIES

Mats	16
Crewguards	16
Insoles	17
Socks	17

MEN'S

Athletic	18
Casual	21
Dress	25
Safety	28

ALL-DAY COMFORT

Celebrating
35 YEARS
of Safety

WOMEN'S ATHLETIC

Spirit II

EN ISO 20347:2012 (OB E SRC) • 315 grams [based on size 38]

30531 Black
2.5-9 (35-43)



- Superior SFC slip-resistant outsole with TripGuard
- Microfibre upper
- Water resistant
- Removable cushioned insole
- Slim fit

CE CERTIFIED
STYLES



THE NUMBER 1 CHOICE FOR WAITRESSES
#1 CHOICE

Liberty

280 grams [based on size 38]

37255 Black 35353 Black/White
2.5-9 (35-43) 2.5-8 (35-42)



- Superior SFC slip-resistant outsole with TripGuard
- Water resistant
- Removable cushioned insole
- Regular fit



Condor

EN ISO 20347:2012 (OB E SRC) • 390 grams [based on size 38]

26730 Black 27041 White
2.5-9 (35-43) 3-8 (36-42)



- Superior SFC slip-resistant outsole with TripGuard
- Water resistant, leather upper
- Removable cushioned insole
- Regular fit



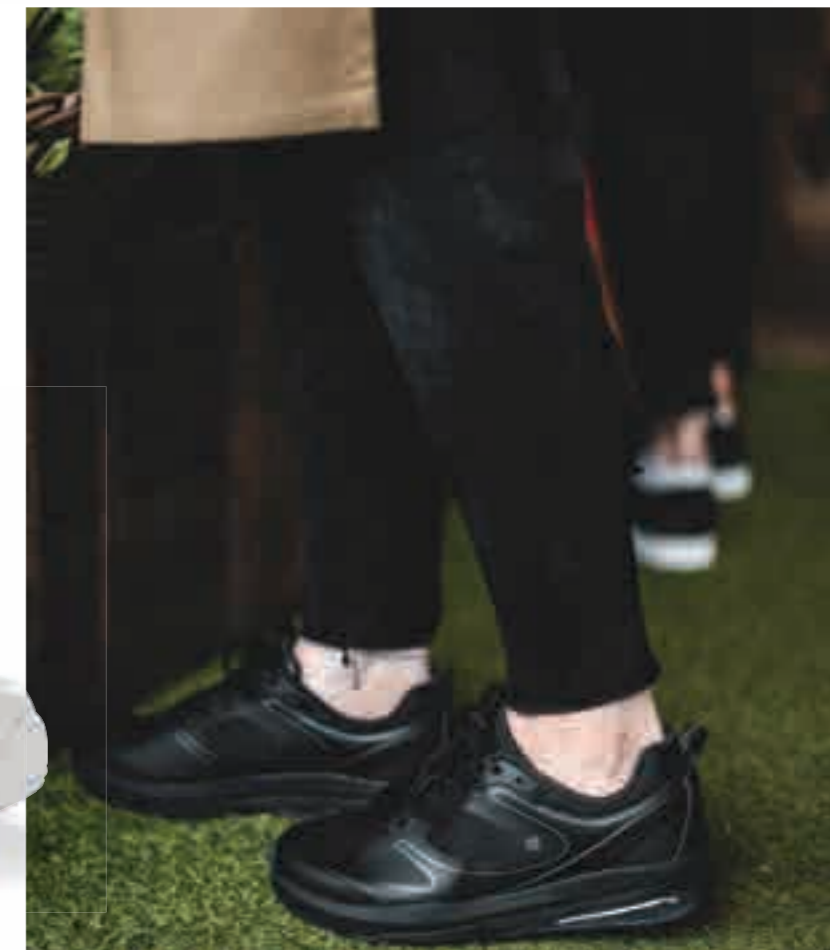
Revolution II

320 grams [based on size 38]

29167 Black 28093 White
2.5-8 (35-42) 2.5-8 (35-42)



- Superior SFC slip-resistant outsole with TripGuard
- Water resistant
- Removable cushioned insole
- Extra cushioning
- Regular fit



LIGHTWEIGHT



Zinc

EN ISO 20347:2012 (OB E SRC) • 270 grams [based on size 42]

66064 Black 3-14 (37-48) **62138 White** 3-13 (37-47)



- Superior SFC slip-resistant outsole with TripGuard
- Water resistant
- Ultra-lightweight
- Wide fit



ALL EVA CLOGS ARE NOW CE CERTIFIED

Karina

215 grams [based on size 38]

Lifa

36907 Black 2.5-9 (35-43) **32709 White** 2.5-8 (35-42)



- Superior SFC slip-resistant outsole with TripGuard
- Water resistant
- Lightweight
- Regular fit



Vitality II

220 grams [based on size 38]

28362 Black 2.5-8 (35-42) **24759 Blue** 2.5-8 (35-42)



- Superior SFC slip-resistant outsole with TripGuard
- Water resistant, breathable upper
- Lightweight
- Regular fit



Radium

EN ISO 20347:2012 (OB E SRC) • 250 grams [based on size 42]

69578 Black 3-13 (37-47)



- Superior SFC slip-resistant outsole with TripGuard
- Water resistant
- Ultra-lightweight
- Removable cushioned insole
- Wide fit



“ After about a month of wearing them on a near daily basis, no foot problems and my legs aren't tired. They are also excellent at non-skid. Plus, they clean up well. ”

PURCHASED STYLE: RADIUM



Delray

430 grams [based on size 42]

32394 Black
2.5-9 (35-43)



- Superior SFC slip-resistant outsole
- Water-resistant Leather
- Removable cushioned insole
- Regular fit



Old School Low-Rider IV

355 grams [based on size 42]

36320 White
3-8 (36-42)



- Superior SFC slip-resistant outsole with TripGuard
- Water-resistant leather upper
- Removable insole
- Extra cushioning
- Regular fit



Old School Low-Rider IV

355 grams [based on size 42]

39362 Black
2.5-9 (35-43)



- Superior SFC slip-resistant outsole with TripGuard
- Water-resistant leather upper
- Removable insole
- Extra cushioning
- Regular fit



Ollie II

210 grams [based on size 38]

36106 Black
2.5-9 (35-43)



- Superior SFC slip-resistant outsole
- Water resistant
- Leather upper
- Removable cushioned insole
- Regular fit



Celebrating
35 YEARS
of Safety



MOZO: STYLE,
PERFORMANCE
& SLIP-RESISTANCE
PERFECT FOR
ANY CULINARY
ENVIRONMENT

CE CERTIFIED
STYLES



Maven

EN ISO 20347:2012 [OB E SRC]
355 grams [based on size 38]

M30390 Black
2.5-9 (35-43)

- Superior slip-resistant traction by Shoes For Crews®
- 100% Vegan
- Removable comfortable PU gel insole
- Water-resistant, waxed canvas upper
- Elastic goring for a slip-on style
- Optional laces for a classic sneaker look
- Three-hole arch ventilation for breathability
- Easy to clean and treated with 3M Scotchgard™ Protector



Mavi

EN ISO 20347:2012 [OB E SRC]*
360 grams [based on size 38]

M31174 Black
2.5-9 (35-43)

- Superior slip-resistant traction by Shoes For Crews®
- Heel counter for support and stability
- Removable comfortable PU gel insole
- Elastic goring for a slip-on style
- Optional laces for a classic sneaker look
- Three-hole arch ventilation for breathability
- Water-resistant, full-grain leather upper

Cater II

EN ISO 20347:2012 (OB E SRC)
410 grams [based on size 38]

40187 Black
2.5-8 (35-42)



- Superior SFC slip-resistant outsole with TripGuard
- Water-resistant leather upper
- Removable cushioned insole
- Regular fit

CE CERTIFIED
STYLES



Saloon II

EN ISO 20347:2012 (OB E SRC)
364 grams [based on size 38]

47808 Black
2.5-8 (35-42)



- Superior SFC slip-resistant outsole with TripGuard
- Water-resistant leather upper
- Removable cushioned insole
- Regular fit



BEST DRESSED



For men's dress shoes see page 25

Mary Jane II

EN ISO 20347:2012 (OB E SRC) • 290 grams [based on size 38]

3002 Black
2.5-9.5 (35-44)



- Superior SFC slip-resistant outsole
- Water resistant
- Leather upper
- Comfort fitting with adjustable strap fastener
- Wide fit



CE CERTIFIED STYLES

Reese

EN ISO 20347:2012 (OB E SRC) • 195 grams [based on size 38]

57160 Black
2.5-8 (35-42)



- Superior SFC slip-resistant outsole with TripGuard
- Water resistant leather upper
- Removable cushioned insole
- Slim fit

CE CERTIFIED STYLES



Envy III

EN ISO 20347:2012 (OB E SRC) • 255 grams [based on size 38] • 3.8 cm heel

52263 Black
2.5-8 (35-42)



- Superior SFC slip-resistant outsole with TripGuard
- Water resistant leather upper
- Removable cushioned insole
- Slim fit



Madison III

EN ISO 20347:2012 (OB E SRC) • 220 grams [based on size 38] • 2.54 cm heel

57889 Black
2.5-8 (35-42)



- Superior SFC slip-resistant outsole with TripGuard
- Water resistant leather upper
- Removable cushioned insole
- Slim fit



Willa

EN ISO 20347:2012 (OB E SRC) • 290 grams [based on size 38] • 3.8 cm heel

55452 Black
2.5-8 (35-42)



- Superior SFC slip-resistant outsole with TripGuard
- Water resistant leather upper
- Removable cushioned insole
- Slim fit



Elva

310 grams [based on size 38] • 5.7cm heel

52118 Black
2.5-8 (35-42)



- Superior SFC slip-resistant outsole with TripGuard
- Water resistant
- Removable cushioned insole
- Slim fit



Jenni

200 grams [based on size 38]

3616 Black
2.5-8 (35-42)



- Superior SFC slip-resistant outsole
- Water resistant leather upper
- Cushioned insole
- Regular fit



Marla

270 grams [based on size 38] • 4.4cm heel

57487 Black
2.5-8 (35-42)



- Superior SFC slip-resistant outsole with TripGuard
- Water resistant leather upper
- Additional comfortable cushioning
- Removable cushioned insole
- Slim fit



Kora

305 grams [based on size 38] • 2.54cm heel

52152 Black
2.5-8 (35-42)



- Superior SFC slip-resistant outsole with TripGuard
- Water resistant leather upper
- Removable cushioned insole
- Slim fit



Evie women's composite safety toe - stylish, comfortable, safe

Celebrating
35 YEARS
of Safety

Evie

EN ISO 20345:2011 (S1) • 385 grams [based on size 38]

75810 Black
3-8 (36-42)

75001 White
3-8 (36-42)



- Superior SFC slip-resistant outsole with TripGuard
- Water resistant
- Composite toe - 200 joule
- Removable cushioned insole
- Clog resistant outsole
- Regular fit



THE NUMBER 1 CHOICE FOR MANAGERS
#1 CHOICE

Bonnie

EN ISO 20345:2011 (S3) • 450 grams [based on size 38]

78393 Black
3-8 (36-42)



- Superior SFC slip-resistant outsole with TripGuard
- Waterproof microfibre upper
- Composite toe - 200 joules
- Removable cushioned insole
- Puncture and clog resistant
- Regular fit

CE CERTIFIED STYLES

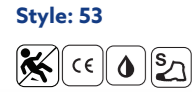


FOR MORE SAFETY STYLES SEE PAGES 28-33

Crewguard® for Men and Women
SFC MightyGrip® Slip-resistant Outsole
Provides Maximum Slip & Fall Protection



Safety Crewguard®
EN ISO 20345:2011



Stretch Crewguard® - NEW!
EN ISO 20347:2012



Ideal for visitors, new hires or any employee not already wearing our superior slip resistant footwear



CrewGuard® Sizes	XXS	XS	S	S+	M	M+	L	XL	XXL
STYLE 53: Men's	-	35-37	37-38	39-41	41-42	43-44	44-45	46-48	49-51
STYLE 53: Women's	32-34	35-38	38-39	40-42	42-43	44-45	-	-	-
STYLE G7014 Men/Women	-	-	34-37	-	38-41	-	42-45	46-48	-

MIGHTYMAT!®
We have you covered

SLIP-PROOF ANY FLOOR!

When employees have both feet safely on the mat, they work faster and more efficiently. With MightyMat! slip-resistant floor mats, any greasy, slippery walkway becomes a safe, high-traction surface.

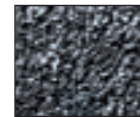
Our patented slip-resistant base keeps mat in place



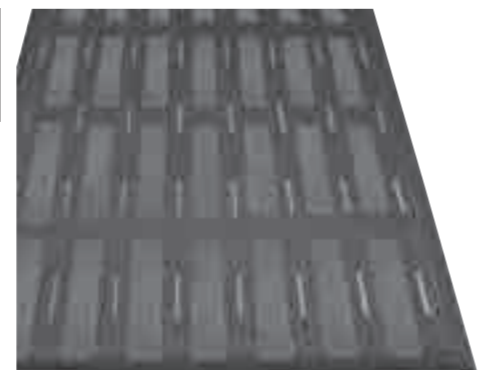
Drainage slots direct liquids away from surface



All-grit, high-traction, slip-resistant surface



Anti-fatigue nodules add cushioning



Cross section of cushioned anti-fatigue layer



Our patented slip-resistant base keeps mat in place



MIGHTYMAT CLASSIC

Style 20:
Dimensions 91.44cm X 152.40 cm
Thickness 6.5 mm

MIGHTYMAT MAX II

Style 40:
Dimensions 91.44cm X 121.92 cm
Thickness 14.8 mm

SFC Comfort Insole

N3411 Unisex: Blue
4-15 (37-50)



SFC Comfort Insole with Gel

N2114 Unisex: Blue
4-13 (37-48)



Gel pads in heel and forefoot for increased cushioning and shock absorption



THE SCIENCE OF KEEPING SKIN DRY



MOISTURE IS THE ENEMY. Drymax® socks feature an anti-blister system: exceptional 3D fit; seamless insides; instep-hugging arch band; dry skin because Drymax® socks stay dry.

STAY DRY. STAY SAFE. Drymax® socks have top and/or bottom air vents, use dense padding for comfort and are infused with antimicrobial fibers to fight odour.

SFC Crew Sock

Unisex: S1810 Black (1 pair per package)
S, M, L, XL
• Dual layer breathable mesh
• Anti-slip wedge
• Vented arch band



SFC No-Show Sock

Unisex: S1297 Black (1 pair per package)
S, M, L, XL
• Dual layer breathable mesh
• Anti-slip wedge
• Vented arch band



WORKPLACE ATHLETE



Evolution II

380 grams [based on size 42]

21211 Black 5-15 (38-50) 28289 White 5-14 (38-49)



- Superior SFC slip-resistant outsole with TripGuard
- Water resistant
- Removable cushioned insole
- Extra cushioning
- Regular fit

Celebrating
35 YEARS
of Safety



Nitro II

EN ISO 20347:2012 (OB E SRC) • 370 grams [based on size 42]

36097 Black 6-12 (39-47)



- Superior SFC slip-resistant outsole with TripGuard
- Microfibre upper
- Water resistant
- Removable cushioned insole
- Slim fit



CE CERTIFIED
STYLES

Condor

EN ISO 20347:2012 (OB E SRC) • 435 grams [based on size 42]

28777 Black 5-13 (38-48) 29166 White 5-12 (38-47)



- Superior SFC slip-resistant outsole with TripGuard
- Water resistant, leather upper
- Removable cushioned insole
- Regular fit



Freestyle II

335 grams [based on size 42]

38140 Black 5-13 (38-48) 32835 Black/White 5-13 (38-48)



- Superior SFC slip-resistant outsole with TripGuard
- Water resistant
- Removable cushioned insole
- Regular fit

THE NUMBER 1 CHOICE FOR WATERS
#1 CHOICE



Endurance II

280 grams [based on size 42]

22782 Black
6-15 (39-50)



- Superior SFC slip-resistant outsole with TripGuard
- Water resistant, breathable upper
- Lightweight
- Regular fit



Grayson

255 grams [based on size 42]

36479 Black
5-13 (38-48)



- Superior SFC slip-resistant outsole with TripGuard
- Water resistant, lightweight upper
- Removable cushioned insole
- Regular fit



Bridgetown

295 grams [based on size 42]

24320 Grey/Citrus **LIMITED EDITION**
5-11 (38-46)



- Superior SFC slip-resistant outsole with TripGuard
- Water resistant, breathable upper
- Lightweight EVA midsole with extra cushioning
- Regular Fit



“ This is my 2nd pair of Endurance II . They are really light and comfortable. ”

PURCHASED STYLE:
ENDURANCE II

Zinc

EN ISO 20347:2012 (OB E SRC) • 270 grams [based on size 42]

66064 Black 62138 White
3-14 (37-48) 3-13 (37-47)



- Superior SFC slip-resistant outsole with TripGuard
- Water resistant
- Ultra-lightweight
- Wide fit

ALL EVA CLOGS ARE NOW CE CERTIFIED

Radium

EN ISO 20347:2012 (OB E SRC) • 250 grams [based on size 42]

69578 Black
3-13 (37-47)



- Superior SFC slip-resistant outsole with TripGuard
- Water resistant
- Ultra-lightweight
- Removable cushioned insole
- Wide fit



“ Comfortable shoes. Slip resistant. Great for kitchen and watery floors. Easy to clean. ”

PURCHASED STYLE: RADIUM

COOL CASUAL CLASSICS

Delray

430 grams [based on size 42]



38649 Black
5-12 (38-47)



- Superior SFC slip-resistant outsole
- Water-resistant Leather upper
- Removable cushioned insole
- Regular fit

Ollie II

325 grams [based on size 42]



34257 Black
5-12 (38-47)



- Superior SFC slip-resistant outsole
- Water resistant
- Leather upper
- Removable cushioned insole
- Regular fit

Old School Low-Rider IV

375 grams [based on size 42]



36111 Black 38960 White
5-12 (38-47) 6-12 (39-47)



- Superior SFC slip-resistant outsole with TripGuard
- Water-resistant leather upper
- Removable insole
- Extra cushioning
- Regular fit



Celebrating
35 YEARS
of Safety



CE CERTIFIED
STYLES

Grind

EN ISO 20347:2012 [OB E SRC]
445 grams [based on size 42]



M31165 Black
6-12 (39-47)

- Superior slip-resistant traction by Shoes For Crews®
- 100% Vegan
- Removable comfort PU Gel insole
- Water-resistant, waxed canvas upper
- Elastic goring for a slip-on style
- Optional laces for a classic look
- Three-hole arch ventilation for breathability
- Easy to clean and treated with 3M Scotchgard™ Protector



Finn

EN ISO 20347:2012 [OB E SRC]
460 grams [based on size 42]



M11057 Black
6-12 (39-47)

- Superior slip-resistant traction by Shoes For Crews®
- Heel counter for support and stability
- Removable comfort PU Gel insole
- Elastic goring for a slip-on style
- Optional laces for a classic sneaker look
- Three-hole arch ventilation for breathability
- Water-resistant, full-grain leather upper



“ I wanted it to be stylish and provide the comfort needed to aid me in my job. I chose the Mozo - Finn and I'm so happy. They look great and they're comfortable. ”

PURCHASED STYLE:
FINN



KITCHEN CASUALS

Cater II - NEW!

EN ISO 20347:2012 (OB E SRC)
410 grams [based on size 42]

41439 Black
5-15 (38-50)



- Superior SFC slip-resistant outsole with TripGuard
- Water-resistant leather upper
- Removable cushioned insole
- Regular fit



CE CERTIFIED
STYLES

Saloon II - NEW!

EN ISO 20347:2012 (OB E SRC)
451 grams [based on size 42]

43261 Black
5-15 (38-50)



- Superior SFC slip-resistant outsole with TripGuard
- Water-resistant leather upper
- Removable cushioned insole
- Regular fit



The perfect kitchen shoe. Easy to wipe clean and comfortable for an all-day shift



DRESS TO IMPRESS



Statesman

425 grams [based on size 42]

1202 Black
6-12 (39-47)



- Superior SFC slip-resistant outsole
- Water resistant, leather upper
- Removable cushioned insole
- Regular fit



FREE & QUICK SHIPPING!
*See inside back page for details.

Senator

460 grams [based on size 42]

1201 Black
5-12 (38-47)

1211 Brown
6-12 (39-47)



- Superior SFC slip-resistant outsole
- Water resistant, leather upper
- Removable cushioned insole
- Regular fit



Celebrating
35 YEARS
of Safety

Cambridge II -
Excellent value
dress shoe perfect
for front of house or
managers



Cambridge II

EN ISO 20347:2012 (OB E SRC) • 460 grams [based on size 42]

2032 Black
5-13.5 (38-49)



- Superior SFC slip-resistant outsole
- Water resistant, leather upper
- Removable cushioned insole
- Regular fit



CE CERTIFIED
STYLES

Ambassador

EN ISO 20347:2012 (OB E SRC) • 350 grams [based on size 42]

2033 Black
6-12 (39-47)



- Superior SFC slip-resistant outsole
- Water resistant, leather upper
- Removable cushioned insole
- Slim fit



Executive Wing Tip III

EN ISO 20347:2012 (OB E SRC) • 460 grams [based on size 42]

2030 Black
5-12 (38-47)



- Superior SFC slip-resistant outsole
- Water resistant, leather upper
- Removable cushioned insole
- Regular fit

CE CERTIFIED
STYLES



Aristocrat III

EN ISO 20347:2012 (OB E SRC) • 440 grams [based on size 42]

2031 Black
5-12 (38-47)



- Superior SFC slip-resistant outsole
- Water resistant, leather upper
- Removable cushioned insole
- Regular fit



Stay safe and comfortable
with the professional looking
Aristocrat III



SAFETY FIRST

CE CERTIFIED STYLES

SAFETY

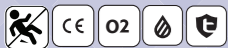
From warehouse to factory floor, the SFC safety range keeps you on your feet

Stratton III - NEW! Waterproof Occupational Boot

EN ISO 20347:2012 (O2) • 584 grams [based on size 42]

Unisex: 64666 Black 3-13 (36-48)

CE CERTIFIED STYLES



- Superior SFC slip-resistant outsole with TripGuard
- Waterproof Leather upper
- No safety toe cap
- Removable cushioned insole
- Regular fit
- Clog-resistant

NEW!
CE Certified Boots Available in Composite Safety Toe or Occupational - without safety toe



Engineer III - NEW!

EN ISO 20345:2011 (S2) • 718 grams [based on size 42]

Unisex: 76736 Black 3-13 (36-48)



- Superior SFC slip-resistant outsole with TripGuard
- Waterproof Leather upper
- Composite toe - 200 joules
- Removable cushioned insole
- Regular fit
- Clog-resistant

Celebrating 35 YEARS of Safety

Tillman III - NEW!

EN ISO 20345:2011 (S2) • 692 grams [based on size 42]

Unisex: 79494 Black 3-13 (36-48)



- Superior SFC slip-resistant outsole with TripGuard
- Waterproof Leather upper
- Composite toe - 200 joules
- Removable cushioned insole
- Regular fit
- Clog-resistant



Clyde

EN ISO 20345:2011 (S3) • 555 grams [based on size 42]

Men's: 73403 Black 5-12 (38-47)



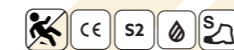
- Superior SFC slip-resistant outsole with TripGuard
- Waterproof microfibre upper
- Composite toe - 200 joules
- Puncture and clog-resistant
- Removable cushioned insole
- Regular fit



Cambridge ST

EN ISO 20345:2011 (S2) • 610 grams [based on size 42]

Men's: 5215 Black 5-13 (38-48)



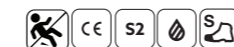
- Superior SFC slip-resistant outsole
- Waterproof microfibre upper
- Steel toe - 200 joules
- Removable cushioned insole
- Regular fit



Executive Wing Tip ST

EN ISO 20345:2011 (S2) • 590 grams [based on size 42]

Men's: 5218 Black 5-12 (38-47)



- Superior SFC slip-resistant outsole
- Waterproof leather upper
- Steel toe - 200 joules
- Removable cushioned insole
- Regular fit

THE NUMBER 1 CHOICE FOR MANAGERS
#1 CHOICE





The Safety Jogger range features High-Performance Traction by SHOES FOR CREWS



Gusto81

EN ISO 20345:2011 (S3)
650 grams [based on size 41]



Unisex: 73695 White 2.5-13 (35-48)



- Superior SFC slip-resistant outsole with TripGuard
- Waterproof coated leather upper
- Steel toe - 200 joules
- Puncture and clog resistant
- Regular fit

CE CERTIFIED STYLES

Roma81

EN ISO 20345:2011 (S3)
695 grams [based on size 41]



Unisex: 74785 Black 2.5-13 (35-48)



- Superior SFC slip-resistant outsole with TripGuard
- Waterproof coated leather upper
- Steel toe - 200 joules
- Puncture and clog resistant
- Regular fit

CE CERTIFIED STYLES

Dolce81

EN ISO 20345:2011 (S3)
650 grams [based on size 41]



Unisex: 76236 Black 2.5-13 (35-48)



- Superior SFC slip-resistant outsole with TripGuard
- Waterproof coated leather upper
- Steel toe - 200 joules
- Puncture and clog resistant
- Regular fit

Volluto81

EN ISO 20345:2011 (S3)
695 grams [based on size 41]



Unisex: 74518 White 2.5-13 (35-48)



- Superior SFC slip-resistant outsole with TripGuard
- Waterproof coated leather upper
- Steel toe - 200 joules
- Puncture and clog resistant
- Regular fit

Lungo81

EN ISO 20345:2011 (S3)
725 grams [based on size 41]



Unisex: 75966 White 2.5-13 (35-48)



- Superior SFC slip-resistant outsole with TripGuard
- Waterproof coated leather upper
- Steel toe - 200 joules
- Puncture and clog resistant
- Regular fit

The ideal safety shoes for kitchens, bakeries and factories.



The Safety Jogger range features High-Performance Traction by SHOES FOR CREWS

CE CERTIFIED STYLES

Elevate81

EN ISO 20345:2011 (S1P)
680 grams [based on size 41]

Unisex: 70482 Black 4-13 (37-48)



- Superior SFC slip-resistant outsole with TripGuard
- Water resistant coated leather upper
- Steel toe - 200 joules
- Puncture and clog resistant
- Regular fit



Rocket81

EN ISO 20345:2011 (S1P)
590 grams [based on size 42]

Unisex: 74811 Black 5-13 (38-48)



- Superior SFC slip-resistant outsole with TripGuard
- Water resistant coated leather upper
- Composite toe - 200 joules
- Puncture and clog resistant
- Regular fit



X1100N81

EN ISO 20345:2011 (S3)
729 grams [based on size 41]

Unisex: 73924 Black 3.5-13 (36-48)



- Superior SFC slip-resistant outsole with TripGuard
- Waterproof coated leather upper
- Steel toe - 200 joules
- Puncture and clog resistant
- Regular fit



CE CERTIFIED STYLES

Advance81

EN ISO 20345:2011 (S1P)
691 grams [based on size 41]

Unisex: 71056 Black 4-13 (37-48)



- Superior SFC slip-resistant outsole with TripGuard
- Water resistant coated leather upper
- Steel toe - 200 joules
- Puncture and clog resistant
- Regular fit



X111081

EN ISO 20345:2011 (S3)
690 grams [based on size 41]

Unisex: 74670 Black 3.5-13 (36-48)



- Superior SFC slip-resistant outsole with TripGuard
- Waterproof coated leather upper
- Steel toe - 200 joules
- Puncture and clog resistant
- Regular fit



Celebrating 35 YEARS of Safety

SAFETY WELLINGTONS



Sentinel

EN ISO 20345:2011 (S4) • 1kg [based on size 42]

2010 White
4-11 (37-46)

2011 Green
4-11 (37-46)

2012 Blue
4-11 (37-46)

2013 Red
4-11 (37-46)

2014 Yellow
4-11 (37-46)



- Superior SFC slip-resistant outsole
- Waterproof PU upper
- Steel toe - 200 joules
- Removable cushioned insole
- Lightweight
- Regular fit



CE CERTIFIED
STYLES

Bastion

EN ISO 20345:2011 (S4) • 1.2kg [based on size 42]

76690 White 4-12 (37-47) 70557 Green 4-12 (37-47)



- SRC slip-resistant PVC outsole
- Waterproof PVC upper
- Steel toe - 200 joules
- Regular fit

CE CERTIFIED
STYLES



Guardian IV

EN ISO 20345:2011 (S4) • 1kg [based on size 42]

2017 White 4-12 (37-47) 2018 Green 4-12 (37-47)



- Superior SFC slip-resistant outsole
- Waterproof PVC upper
- Steel toe - 200 joules
- Removable cushioned insole
- Regular fit

THE NUMBER 1 CHOICE FOR BUTCHERS
#1
CHOICE

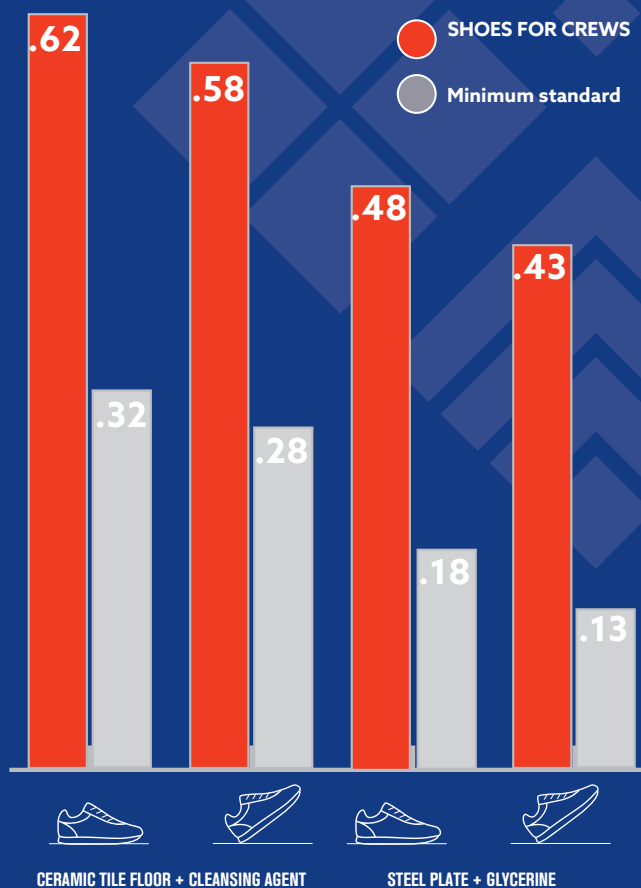


Celebrating
35 YEARS
of Safety

**THE
SHOE
THAT
GRIPS®**

SHOES FOR CREWS SRC RESULTS

GREATLY EXCEEDED
INDUSTRY STANDARDS



Slip Resistance Test EN ISO 13287:2012, performed by TUV Rheinland LGA Products GmbH in Leipzig, Germany during January 2017. * On a scale where 0.0 is the absence of friction and 1.0 is very high friction (e.g. dry carpet), SFC rated .63 - more than tripling the .18 minimum standard. All SFC shoes use the Shoes For Crews patented slip-resistant outsole. Product tested: Bridgetown 28740.

Distributør i Sverige og Norge

T E L L E F S E N

Preben Tellefsen AS

Tel: +47 38 01 90 80 Email: info@tellefsen.no

Web: www.tellefsen.no